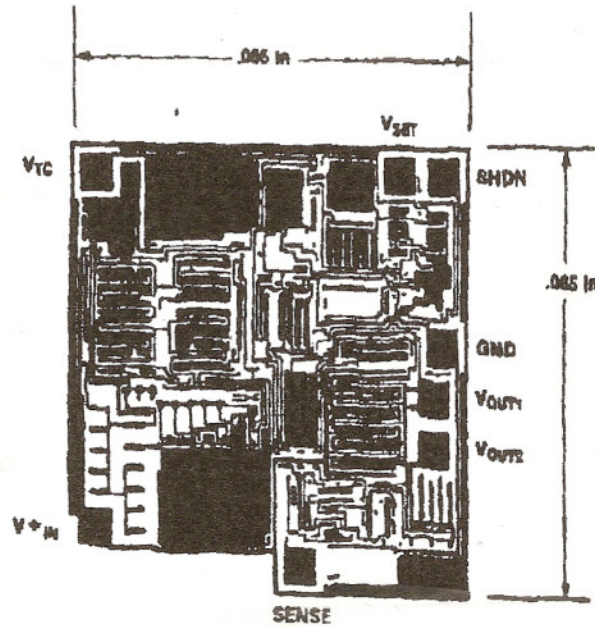




# Sierra Components, Inc.

2222 Park Place Building 3 Suite E • Minden, Nevada 89423  
Phone: 775.783.4940 Fax: 775.783.4947

Chip back potential is the level which bulk silicon is maintained by on-chip connection, or it is the level to which the chip back must be connected when specifically stated below. If no potential is given the chip back should be isolated.



**Topside Metal: Al**  
**Backside: Si**  
**Backside Potential:**  
**Mask Ref:**  
**Bond Pads : .004 min**

**APPROVED BY: CB**  
**MFG: Harris**

**DIE SIZE: .065" x .065"**  
**THICKNESS: .019"**

**DATE: 2/6/01**  
**P/N: ICL7663D**

DG 10.1.2  
Rev A 3-4-99